

WHAT'S ON

LONDON 2011-2012

LEISURE
CONNECT

Tickets to theatre & other city essentials

Contact Your Travel Agent for Direct Access to Special Rates on Preferred Ticket Inventory

THE 39 STEPS

COMEDY

John Buchan's *The 39 Steps*, memorably filmed by Alfred Hitchcock in 1935 - is thrillingly adapted for the West End stage. Nothing has been cut from this hilarious and spectacular version of Britain's most spell-binding thriller - legendary scenes include the chase on the Flying Scotsman, the escape on the Forth Bridge, the first theatrical bi-plane crash ever staged and the death-defying (or nearly!) finale at the London Palladium! With four actors playing a minimum of one hundred and thirty nine roles, this is the most astonishing theatrical tour de force of the year.

SCHEDULE: Tuesday – Sunday. Dark Monday.

VENUE: Criterion Theatre, Piccadilly Circus, London, W1. Nearest Tube: Piccadilly Circus



ALL'S WELL THAT ENDS WELL

PLAY

Helena loves the arrogant Bertram, and when she cures the King of France of his sickness, she claims Bertram as her reward. But her brand-new husband, flying from Helena to join the wars, attaches two obstructive conditions to their marriage – conditions he is sure will never be met. This will be the first production of *ALL'S WELL THAT ENDS WELL* at the Globe.

SCHEDULE: Performance Schedule Varies - Please see calendar online.

VENUE: Shakespeare's Globe Theatre, 21 New Globe Walk Bankside, London, SE1.



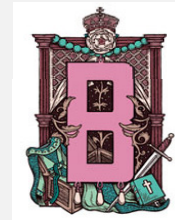
ANNE BOLEYN

PLAY

Hunting through an old chest, the newly crowned James I discovers the controversial legacy of Anne Boleyn, Henry VIII's notorious second wife. Time jumps back 70 years, when the witty and flirtatious Anne was in love with Henry, but also with the most dangerous ideas of her day. Conspiring with the exiled William Tyndale, she plots to make England Protestant – forever. *ANNE BOLEYN* reveals the debt the outrageous but scholarly James owed to Anne when he shrewdly reconciled England's religious factions by creating his common, 'authorized' Bible.

SCHEDULE: Performance Schedule Varies - Please see calendar online.

VENUE: Shakespeare's Globe Theatre, 21 New Globe Walk Bankside, London, SE1.



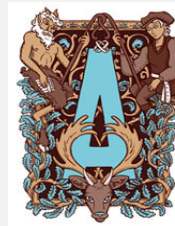
AS YOU LIKE IT

PLAY

In *AS YOU LIKE IT*, Rosalind, the daughter of a banished duke, falls in love with Orlando at a wrestling match, but her usurping uncle, jealous of her popularity, banishes her from court. Disguised as a boy she seeks out her father and his friends in the Forest of Arden. Here she meets Orlando again and, under the guise of a young man, counsels him in the art of love.

SCHEDULE: Performance Schedule Varies - Please see calendar online.

VENUE: Shakespeare's Globe Theatre, 21 New Globe Walk Bankside, London, SE1.



THE BEGGAR'S OPERA

EVENT

Discover the innocent but feisty heroine Polly Peachum, her wronged rival Lucy Lockit and Macheath, their irrepressible highwayman lover, as a tangled web of lies and deceit blissfully unravels. Deep in London's underworld, this comedy of highwaymen, hangmen and harlots is an uncompromising exposure of moral and financial corruption. Director Lucy Bailey injects her trademark visual dynamism into John Gay's original text. The City Waites use authentic instruments to recreate the popular ballads and folk tunes of the time.

SCHEDULE: Varies. Please enquire or view online calendar. From 23 June to 23 July.

VENUE: Open Air Theatre, Inner Circle Regents Park, London, NW1. Nearest Tube: Baker Street



WHAT'S ON

LONDON 2011-2012

LEISURE
CONNECT

Tickets to theatre & other city essentials

Contact Your Travel Agent for Direct Access to Special Rates on Preferred Ticket Inventory

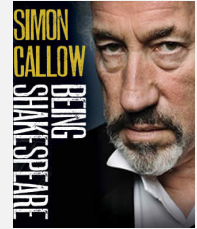
BEING SHAKESPEARE

PLAY

Star of stage and screen, Simon Callow brings to life Shakespeare's unforgettable characters and the real man behind the legend in this triumphant one-man show. Callow joins forces with Jonathan Bate (Shakespeare biographer and editor of the RSC's Shakespeare: The Complete Works) and director Tom Cairns (Old Vic's All About My Mother, National Theatre's Aristocrats) to fill the stage in an extraordinary theatrical event.

SCHEDULE: Monday – Saturday. Dark Sunday. Performances from 15 June.

VENUE: Trafalgar Studios, Whitehall, London, SW1A. Nearest Tube: Trafalgar Square



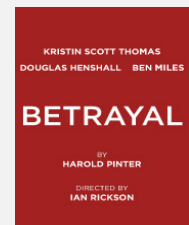
BETRAYAL

PLAY

In Harold Pinter's Olivier award-winning play, set over a period of nine years, we are shown the high price of passion, the damage inflicted by desire and how our loves and our losses echo and accumulate through time. Now considered a modern classic, this brand new production stars Kristin Scott Thomas, Douglas Henshall and Ben Miles, and is directed by Ian Rickson (The Seagull, The Children's Hour and Jerusalem).

SCHEDULE: Monday – Saturday. Dark Sunday.

VENUE: Comedy Theatre, Panton Street, London, SW1Y. Nearest Tube: Piccadilly Circus



BETTE AND JOAN

PLAY

Starring Anita Dobson and Greta Scacchi. Screen divas and rivals Bette Davis and Joan Crawford go head to head in a new play based on their legendary feud. The stars, both at low points in their careers, meet on the set of Whatever Happened to Baby Jane? The high risk shocker becomes a surprise hit that propels them back to stardom.

SCHEDULE: Tuesday – Sunday. Dark Monday.

VENUE: Arts Theatre, 6 - 7 Great Newport Street, London, WC2H. Nearest Tube: Leicester Square



BETTY BLUE EYES

MUSICAL

Set in 1947, this utterly British musical based on the Alan Bennett/Malcolm Mowbray film A Private Function, is full of eccentric characters, such as the strange odd couple, Gilbert - an evangelistic chiroprapist, and Joyce - a nobody determined to be somebody; Inspector Wormold - an obsessive destroyer of illegal meat; Mother Dear - 'She's seventy four and ravenous'; along with a weird assortment of bullies and snobs and of course, our star, Betty the pig.

SCHEDULE: Monday – Saturday. Dark Sunday.

VENUE: Novello Theatre, Aldwych, London, WC2B. Nearest Tube: Charing Cross or Embankment



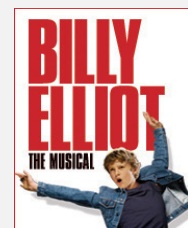
BILLY ELLIOT THE MUSICAL

MUSICAL

Set in the North East of England, *Billy Elliot* is a funny, heart-warming and feel-good celebration of one young boy's dream. This original story captured hearts worldwide when the film was released in October 2000; it broke box office records worldwide and was nominated three Golden Globes, three Oscars and 13 Bafta Awards, among others. The original multi-award winning creative team from the film - director Stephen Daldry, writer Lee Hall and choreographer Peter Darling - are joined by music legend, Elton John, to bring BILLY ELLIOT to life on the London stage.

SCHEDULE: Monday – Saturday. Dark Sunday.

VENUE: Victoria Palace Theatre, Victoria Street, London, SW1. Nearest Tube: Victoria



WHAT'S ON

LONDON 2011-2012

LEISURE
CONNECT

Tickets to theatre & other city essentials

Contact Your Travel Agent for Direct Access to Special Rates on Preferred Ticket Inventory

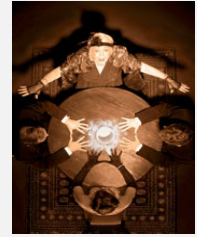
BLITHE SPIRIT

PLAY

Noel Coward's comedy centres on the novelist Charles Condomine and his second wife Ruth who are literally haunted by a past relationship when an eccentric medium, Madame Arcati, manages to conjure up the ghost of Charles's neurotic first wife, Elvira, at a séance. Olivier Award® winner Alison Steadman plays Madame Arcati.

SCHEDULE: Monday - Saturday. Dark Sunday.

VENUE: Apollo Theatre, Shaftesbury Avenue, London, W1. Nearest Tube: Piccadilly Circus



BLOOD BROTHERS

MUSICAL

Few musicals have received quite such acclaim as *Blood Brothers*. It was recently voted MOST POPULAR BRITISH MUSICAL OF ALL TIME by readers of *The New York Times* and has scooped up four awards for Best Musical in London and seven Tony Award® nominations on Broadway. Written by Willy Russell, one of England's leading contemporary dramatists, it tells the captivating and moving tale of twins who, separated at birth, grow up on opposite sides of the tracks.

SCHEDULE: Monday – Saturday. Dark Sunday.

VENUE: Phoenix Theatre, Charing Cross Road, London, WC2. Nearest Tube: Leicester Square



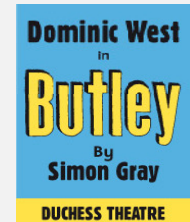
BUTLEY

PLAY

Dominic West plays rapier-tongued lecturer Ben Butley in this revival of Simon Gray's black comedy. Ben Butley is having a monumentally bad day. So bad, he's making sure everyone else has a worse one. His estranged wife has taken up with the most boring man in London. His beloved protege has found a new benefactor. And in an unprecedented act of betrayal even the English department's resident failure has a book deal. But will Butley's trusty arsenal might finally prove to be the weapons of his own self-destruction?

SCHEDULE: Monday – Saturday. Dark Sunday.

VENUE: Duchess Theatre, Catherine Street, London, WC2B. Nearest Tube: Covent Garden



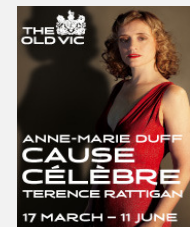
CAUSE CELEBRE

PLAY

To celebrate the centenary of Terence Rattigan's birth, Thea Sharrock directs Anne-Marie Duff in his final play. Based on the true story of Alma Rattenbury, CAUSE CELEBRE is a tale of love, betrayal, loyalty and obsession. Terence Rattigan is one of England's greatest playwrights. His many plays include *After the Dance*, *Flare Path*, *The Winslow Boy*, *The Browning Version*, *The Deep Blue Sea*, *Man And Boy* and *Cause Celebre*.

SCHEDULE: Monday – Saturday. Dark Sunday. Performances through 11 June.

VENUE: Old Vic Theatre, Waterloo Road, London, SE1. Nearest Tube: Waterloo



CHICAGO

MUSICAL

The multi-award winning CHICAGO holds the record of being the longest running Broadway musical to ever play in London. It is still one of the West End's most popular shows thanks to its inventive casting, sizzling score and sensational choreography inspired by the legendary Bob Fosse. As the story goes, chorus girl, Roxie Hart shoots her lover and ends up in Cook County Jail, where she meets fellow murderess, Velma Kelly. In a world where celebrity is power they fight to keep their names in the headlines and battle to keep from Death Row.

SCHEDULE: Monday – Saturday. Dark Sunday. Performances through 27 August.

VENUE: Cambridge Theatre, Earlham Street London, WC2H. Nearest Tube: Covent Garden



WHAT'S ON

LONDON 2011-2012

LEISURE
CONNECT

Tickets to theatre & other city essentials

Contact Your Travel Agent for Direct Access to Special Rates on Preferred Ticket Inventory

CRAZY FOR YOU

MUSICAL

George and Ira Gershwin's hit musical comedy is packed full of classic songs including "I Got Rhythm", "Someone To Watch Over Me", "Embraceable You" and "Nice Work If You Can Get It". The original 1992 production won both the Tony and Olivier Award for Best New Musical. The creative team from the multi-award winning production of Hello, Dolly! reunites, including director Timothy Sheader, choreographer Stephen Mear and designer Peter McKintosh, with Into the Woods musical supervisor, Gareth Valentine.

SCHEDULE: Varies. Please enquire or view online calendar. From 28 July to 10 September.

VENUE: Open Air Theatre, Inner Circle Regents Park, London, NW1. Nearest Tube: Baker Street



DIRTY DANCING

MUSICAL

An unprecedented live experience, exploding with heart-pounding music, breathtaking emotion and sensationally sexy dancing. Seen by millions across the globe, this worldwide smash-hit tells the classic story of Baby and Johnny, two fiercely independent young spirits from different worlds, who come together in what will be the most challenging and triumphant summer of their lives. Told by a tremendous cast of 37 and featuring 35 hit songs, including "Hungry Eyes", "Hey Baby, Do You Love Me?" and the heart stopping "I've Had The Time Of My Life".

SCHEDULE: Monday – Saturday. Dark Sunday. Performances through 09 July.

VENUE: Aldwych Theatre, Aldwych, London, WC2. Nearest Tube: Covent Garden or Charing Cross



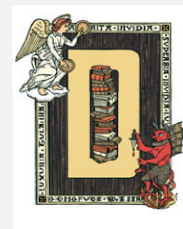
DOCTOR FAUSTUS

PLAY

In Marlowe's great tragedy, the title character, restless for knowledge, forsakes scholarship for magic and makes a pact with the Devil: if the evil spirit Mephistopheles will serve him for 24 years, Faustus will yield his soul to the Devil after death. It isn't long before Faustus has doubts about the bargain, but Mephistopheles has plenty of entertainment at hand to distract Faustus from the terrifying reality of his position and the prospect of its agonising conclusion. Full of anarchic comedy and featuring Arthur Darvill (current star of Doctor Who) as Mephistopheles.

SCHEDULE: Performance Schedule Varies - Please see calendar online.

VENUE: Shakespeare's Globe Theatre, 21 New Globe Walk Bankside, London, SE1.



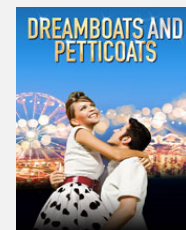
DREAMBOATS AND PETTICOATS

MUSICAL

Written by Marks and Gran, the team behind the popular sitcoms *Goodnight Sweetheart*, *Birds Of A Feather*, and *Shine On Harvey Moon*, will give you the greatest time of your life – taking you back to a time when each passing week brought another classic track. Featuring songs from Roy Orbison, The Shadows, Eddie Cochran, Billy Fury, Chuck Berry and many more.

SCHEDULE: Monday – Saturday. Dark Sunday.

VENUE: Playhouse Theatre, Northumberland Avenue, London WC2. Nearest Tube: Embankment



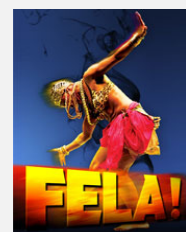
FELA!

MUSICAL

His story inspired a nation. His music inspired the world. The Tony Award-winning FELA!, is the true story of the legendary Nigerian musician Fela Kuti, whose soulful Afrobeat rhythms ignited a generation. Inspired by his mother, a civil rights champion, he defied a corrupt and oppressive military government and devoted his life and music to the struggle for freedom and human dignity. Fela! is a triumphant tale of courage, passion and love, featuring Fela Kuti's captivating music and the visionary direction and choreography of Tony-Award winner Bill T. Jones.

SCHEDULE: Tuesday – Sunday. Dark Monday. Performances from 20 July to 28 August.

VENUE: Sadler's Wells, Rosebery Avenue, London, EC1R. Nearest Tube: Angel



WHAT'S ON

LONDON 2011-2012

LEISURE
CONNECT

Tickets to theatre & other city essentials

Contact Your Travel Agent for Direct Access to Special Rates on Preferred Ticket Inventory

FLARE PATH

PLAY

Trevor Nunn directs Sienna Miller in Terence Rattigan's *FLARE PATH*. It is 1942. At the Falcon Hotel, on the Lincolnshire coast, Teddy a young RAF bomber pilot celebrates a reunion with his actress wife Patricia. They are thrown into upheaval when Peter, Patricia's ex lover and Hollywood heartthrob arrives and an urgent bombing mission over Germany is ordered. Who will make the sacrifice during the long night, as Patricia finds herself at the centre of an emotional conflict as unpredictable as the war in the skies.

SCHEDULE: Monday – Saturday. Dark Sunday. Performance through 11 June.

VENUE: Theatre Royal Haymarket, Haymarket, London, SW1. Nearest Tube: Piccadilly Circus or Leicester Square



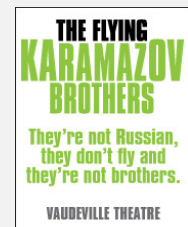
THE FLYING KARAMAZOV BROTHERS

EVENT

Take four entertainers who are musicians, comedians, acrobats, dancers, jugglers and philosophers. Add kilts, moustaches, musical instruments, two thousand cardboard boxes, tutus, topical satire and the ability to juggle anything. Who are they? The Flying Karamazov Brothers. They don't fly, they're not Russian and they're not brothers. But they are the funniest, most thought-provoking, kilt-wearing, clever idiots in town. This multi-faceted, mischievous and marvellous show is their first visit back to London for 17 years!

SCHEDULE: Wednesday – Monday. Dark Tuesday. From 09 June to 10 September.

VENUE: Vaudeville Theatre, Strand, London, WC2R. Nearest Tube: Charing Cross



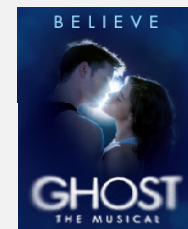
GHOST

MUSICAL

The dazzling new musical *GHOST*, based on the phenomenal Oscar winning Paramount Pictures film written by Bruce Joel Rubin and starring Patrick Swayze, Demi Moore and Whoopi Goldberg, opens at the Piccadilly Theatre in June 2011. A timeless fantasy about the power of love in which Sam is trapped as a ghost between this world and the next trying to communicate with girlfriend Molly through a phoney psychic, in the hope of saving her from his murderer.

SCHEDULE: Monday – Saturday. Dark Sunday. Performances from 22 June.

VENUE: Piccadilly Theatre, Denman Street, London, W1. Nearest Tube: Piccadilly Circus



GHOST STORIES

PLAY

Direct from a sell-out season at the Lyric Hammersmith, comes *Ghost Stories*, a truly terrifying theatrical experience. Written and directed by *The League of Gentlemen's* master of the macabre, Jeremy Dyson, and Andy Nyman, co-creator and director of Derren Brown's television and stage shows and star of *Dead Set* and *Severance*, this is one event not to miss this Summer.

SCHEDULE: Tuesday – Sunday. Dark Monday. Performances through 19 June.

VENUE: Duke of Yorks Theatre, St Martin's Lane, London, WC2. Nearest Tube: Leicester Square



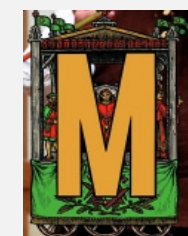
THE GLOBE MYSTERIES

PLAY

Beginning with the creation and ending with the last judgement, The English Mysteries introduced aspects of medieval life into theatrical representations of the Bible. Lavish costumes, ballad singers and musicians bring a rich theatricality to Southwark this summer. Drawing on medieval traditions and inspired by the stories of the Bible, The Globe Mysteries celebrate the spirit of medieval street theatre and processional performance and take a fresh and contemporary look at the Mystery Plays as one of the most important influences on theatre.

SCHEDULE: Performance Schedule Varies - Please see calendar online.

VENUE: Shakespeare's Globe Theatre, 21 New Globe Walk Bankside, London, SE1.



WHAT'S ON

LONDON 2011-2012

LEISURE
CONNECT

Tickets to theatre & other city essentials

Contact Your Travel Agent for Direct Access to Special Rates on Preferred Ticket Inventory

THE GOD OF SOHO

PLAY

A thief in heaven steals the divinity of the gods. Meanwhile down on earth some fetish items have been nicked from a reality TV star and she's facing exposure in the tabloids. Sex shops and comedy, gods and homeless people, all collide in a fierce, hectic and hilarious story about people looking for the divine. In Essex. As bracingly modern as Che Walker's *The Frontline*, which thrilled Globe audiences in 2008 and 2009, *THE GOD OF SOHO* is not for the faint-hearted. Bursting with dirty language and filthy content.

SCHEDULE: Performance Schedule Varies - Please see calendar online.

VENUE: Shakespeare's Globe Theatre, 21 New Globe Walk Bankside, London, SE1.



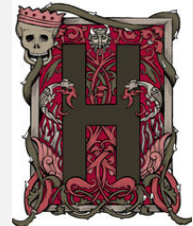
HAMLET

PLAY

Encompassing political intrigue and sexual obsession, philosophical reflection and violent action, tragic depth and wild humour, *HAMLET* is Shakespeare's 'poem unlimited', a colossus in the story of the English language and the fullest expression of Shakespeare's genius. Lasting only two-and-a-half hours at the Globe or when touring with an Elizabethan-style stage, a handful of players will perform a raw, thrillingly elemental production of this inexhaustible play.

SCHEDULE: Performance Schedule Varies - Please see calendar online.

VENUE: Shakespeare's Globe Theatre, 21 New Globe Walk Bankside, London, SE1.



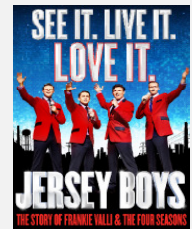
JERSEY BOYS

MUSICAL

You know their songs...now discover their story! *Jersey Boys*, the story of Frankie Valli and The Four Seasons, is now open at the Prince Edward Theatre. Discover the rags-to-rock-to-riches tale of four boys working their way from the streets of New Jersey to the heights of international pop stardom. Featuring all the classic hits: "Sherry", "Big Girls Don't Cry", "Can't Take My Eyes Off You", "Bye Bye Baby (Baby Goodbye)", "Working My Way Back To You", "Walk Like A Man", "December 1963 (Oh What A Night)" and more.

SCHEDULE: Tuesday – Sunday. Dark Monday.

VENUE: Prince Edward Theatre, Old Compton Street, London, W1. Nearest Tube: Leicester Square



LEGALLY BLONDE

MUSICAL

College sweetheart and homecoming queen Elle Woods (Sheridan Smith) doesn't take no for an answer. So when her boyfriend Warner (Richard Fleeshman) dumps her for someone serious, Elle puts down the credit card, hits the books, and heads for Harvard Law School! Based on the hit movie of the same name, *Legally Blonde* the musical is led by a dynamic creative team, including Tony award®-winning director and Olivier® nominated choreographer Jerry Mitchell (*Hairspray*).

SCHEDULE: Monday, Wednesday – Sunday. Dark Tuesday.

VENUE: Savoy Theatre, Strand, London, WC2. Nearest Tube: Charing Cross or Embankment



LEND ME A TENOR THE MUSICAL

MUSICAL

This uproarious new musical comedy by Peter Sham and Brad Carroll is a riotous, unpredictable explosion of mistaken identities and unexpected romance - based on the award-winning West End and Broadway hit comedy by Ken Ludwig. It's 1934, and the world's greatest tenor Tito Merelli has come to Cleveland, Ohio, to save its Grand Opera Company by singing Otello. When he is unexpectedly incapacitated, chaos ensue when Max, the Opera Director's meek assistant, is given the daunting task of finding a last-minute replacement.

SCHEDULE: Monday – Saturday. Dark Sunday.

VENUE: Gielgud Theatre, Shaftesbury Avenue, London, W1D. Nearest Tube: Piccadilly Circus



WHAT'S ON

LONDON 2011-2012

LEISURE
CONNECT

Tickets to theatre & other city essentials

Contact Your Travel Agent for Direct Access to Special Rates on Preferred Ticket Inventory

LES MISÉRABLES

MUSICAL

Cameron Mackintosh's legendary production of *Les Misérables* is indisputably the world's most popular musical. This international award-winning show sweeps its audience through an epic tale of passion and power set against the backdrop of a nation in the grip of revolution. A spectacular adaptation of Victor Hugo's masterpiece novel, *Les Misérables* continues to thrill audiences night after night.

SCHEDULE: Monday – Saturday. Dark Sunday.

VENUE: Queen's Theatre, Shaftesbury Avenue, London W1. Nearest Tube: Piccadilly Circus



LORD OF THE FLIES

PLAY

After a group of schoolboys survive a massive plane crash, what starts as a classic desert island adventure quickly becomes a struggle for survival as superstition and immorality sees the community slide into a darkly sinister world. Timothy Sheader directs William Golding's gripping drama. Created by the same team as last season's *The Crucible*, the production will rediscover this gripping drama in the unconfined and unparalleled atmosphere of theatre in the open air. Recommended for those at least 11 years of age; some scenes may be frightening to younger audiences.

SCHEDULE: Varies. Please enquire or view online calendar. From 19 May to 18 June.

VENUE: Open Air Theatre, Inner Circle Regents Park, London, NW1. Nearest Tube: Baker Street



THE LION KING

MUSICAL

Set against the majesty of the Serengeti Plains and to the evocative rhythms of Africa, Disney's multi-award winning musical *The Lion King* will redefine your expectations of theatre. A spectacular visual feast, this adaptation of Disney's much-loved film transports audiences to a dazzling world that explodes with glorious colours, stunning effects and enchanting music. At its heart, *The Lion King* is the powerful and moving story of Simba - the epic adventure of his journey from wide-eyed cub to his destined role as King of the Pridelands.

SCHEDULE: Tuesday – Sunday. Dark Monday.

VENUE: Lyceum Theatre, Wellington Street, London, WC2. Nearest Tube: Covent Garden



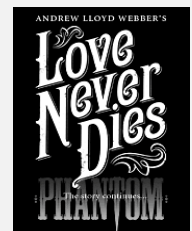
LOVE NEVER DIES

MUSICAL

The principal characters from *The Phantom of the Opera* continue their stories in Andrew Lloyd Webber's *Love Never Dies*. Ten years after the mysterious disappearance of the Phantom from the Paris Opera House, Christine Daae accepts an offer to come to America and perform at New York's fabulous new playground of the world – Coney Island. Christine arrives in New York with her husband Raoul and their son Gustave. She soon discovers the identity of the anonymous impresario who has lured her from France to sing.

SCHEDULE: Monday – Saturday. Dark Sunday.

VENUE: Adelphi Theatre, Strand, London, WC2. Nearest Tube: Charing Cross



MAMMA MIA!

MUSICAL

Night after night, audiences are having the time of their lives at *Mamma Mia!*. Catherine Johnson's sunny, funny story of love, laughter and friendship has been thrilling London audiences for over 10 years. More recently it became a hit movie when the three women who created the worldwide stage smash adapted it for the silver screen. Inspired by the storytelling magic of ABBA's songs, from "Dancing Queen" and "Take A Chance On Me" to "Super Trouper" and "Thank You For The Music".

SCHEDULE: Monday – Saturday. Dark Sunday.

VENUE: Prince of Wales Theatre, Coventry Street, London, W1. Nearest Tube: Piccadilly Circus



WHAT'S ON

LONDON 2011-2012

LEISURE
CONNECT

Tickets to theatre & other city essentials

Contact Your Travel Agent for Direct Access to Special Rates on Preferred Ticket Inventory

MATILDA THE MUSICAL

MUSICAL

The Royal Shakespeare Company's sensational production of Roald Dahl's much-loved story bursts onto the West End stage in this brand new musical version by Dennis Kelly and award-winning musician and comedian Tim Minchin. Children and adults alike will be thrilled and delighted by the story of the special little girl with an extraordinary imagination. Directed by Matthew Warchus with choreography by Peter Darling (*Billy Elliot the Musical*). The Evening Standard hails this production as "a triumph. Enchanting, bold and ingenious."

SCHEDULE: Monday – Saturday. Dark Sunday. Performances from 18 October.

VENUE: Cambridge Theatre, Earlham Street London, WC2H. Nearest Tube: Covent Garden



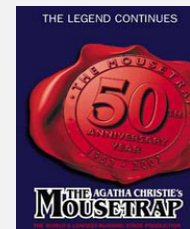
THE MOUSETRAP

PLAY

Agatha Christie's *The Mousetrap* has kept audiences guessing for over five decades. This world record-breaking production continues to enthrall, to entertain and to thrill audiences still flocking to St Martin's Theatre from every corner of the globe. In her own inimitable style, Dame Agatha Christie has created an atmosphere of shuddering suspense and a brilliantly intricate plot where murder lurks around every corner. Be part of history. Get tickets to *The Mousetrap*.

SCHEDULE: Monday – Saturday. Dark Sunday.

VENUE: St Martin's Theatre, West Street, London, WC2. Nearest Tube: Leicester Square



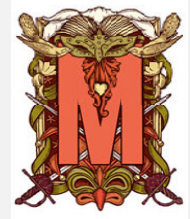
MUCH ADO ABOUT NOTHING

PLAY

Driven along by a romance all the more charming for being unacknowledged, *MUCH ADO ABOUT NOTHING* is a miracle of comic and dramatic suspense and gives us, in the bantering Beatrice and Benedick, two of Shakespeare's wittiest, most lovable pair of lovers.

SCHEDULE: Performance Schedule Varies - Please see calendar online.

VENUE: Shakespeare's Globe Theatre, 21 New Globe Walk Bankside, London, SE1.



MILLION DOLLAR QUARTET

MUSICAL

The Tony Award-winning story of the night ELVIS PRESLEY, JOHNNY CASH, CARL PERKINS and JERRY LEE LEWIS came together to make music, and ended up making history. Inspired by the actual event, that took place on 4 December 1956 at Sun Records in Memphis, this ecstatic and engaging musical is a story of fame, friendship, discovery, divided loyalties, professional jealousy and incredible music as four of the music industry's most extraordinary talents, all in their creative prime, made music together for the first and only time in their careers.

SCHEDULE: Monday – Saturday. Dark Sunday.

VENUE: Noel Coward Theatre, St Martin's Lane, London, WC2. Nearest Tube: Leicester Square



THE PHANTOM OF THE OPERA

MUSICAL

The unforgettable musical *The Phantom of the Opera* traces the tragic love story of a beautiful opera singer and a young composer shamed by his physical appearance into a shadowy existence beneath the majestic Paris Opera House. A newly installed state of the art digital sound system now makes Andrew Lloyd Webber's spine-tingling score sound better than ever. The combination of opulent sets, beautiful costumes and fabulous special effects, creates a theatrical experience not to be missed.

SCHEDULE: Monday – Saturday. Dark Sunday.

VENUE: Her Majesty's Theatre, Haymarket, London, SW1. Nearest Tube: Piccadilly Circus



WHAT'S ON

LONDON 2011-2012

LEISURE
CONNECT

Tickets to theatre & other city essentials

Contact Your Travel Agent for Direct Access to Special Rates on Preferred Ticket Inventory

PRISCILLA QUEEN OF THE DESERT

MUSICAL

Adapted from the Oscar-winning film, *Priscilla Queen of the Desert* is Australia's most successful and best-loved musical which has already been seen by over one million people. *Priscilla* is the heart warming, uplifting adventure of three friends, a glamorous performing trio, who hop aboard a battered old bus (Priscilla) to take their show to the middle of the Australian outback. These three larger-than-life characters go searching for love and friendship and end up finding more than they could ever have dreamed.

SCHEDULE: Tuesday – Sunday. Dark Monday.

VENUE: Palace Theatre, Shaftesbury Avenue, London, W1. Nearest Tube: Leicester Square



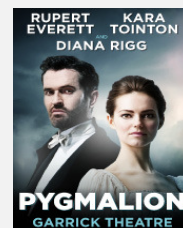
PYGMALION

PLAY

BAFTA nominee Rupert Everett stars in this dazzling production of one of theatre's most entertaining explorations of sexual politics and class restrictions. Egocentric Professor of Phonetics, Henry Higgins, makes a bet with his friend, Colonel Pickering, that he can transform the manners and speech of Cockney flower girl Eliza Doolittle and pass her off as a society lady. *PYGMALION* remains one of the most popular of George Bernard Shaw's plays, full of his trademark wit, style and provocative insights, as well as a beguiling and enduring humour.

SCHEDULE: Monday – Saturday. Dark Sunday.

VENUE: Garrick Theatre, Charing Cross Road, London, WC2. Nearest Tube: Charing Cross or Leicester Square



THE RAILWAY CHILDREN

PLAY

THE RAILWAY CHILDREN – now playing live from Waterloo Station Theatre. After two sell out and critically acclaimed summer runs at the National Railway Museum with York Theatre Royal, this breathtaking theatrical event is now live in London, transforming the former Eurostar platforms at Waterloo Station! One of the country's best loved novels comes to life using this unique theatre setting that has been converted into a 1,000 seat venue with audiences sitting either side of a real railway track.

SCHEDULE: Monday, Wednesday – Sunday. Dark Tuesday.

VENUE: The Waterloo Station Theatre, London, SE1 Nearest Tube: Waterloo



RICHARD III

PLAY

The final season of The Bridge Project starring Kevin Spacey in the title role of *RICHARD III* and directed by Sam Mendes, for a strictly limited run 18 June through 11 September.

SCHEDULE: Tuesday – Sunday. Dark Monday.

VENUE: Old Vic Theatre, Waterloo Road, London, SE1 Nearest Tube: Waterloo



ROCK OF AGES

MUSICAL

This "absurdly enjoyable rock musical" (The New York Times) is the hilarious story of a small town girl and a big city rocker falling in love to the greatest songs of the 1980s, including Don't Stop Believin, We Built This City, The Final Countdown, Wanted Dead or Alive, and Here I Go Again. This Tony Award-nominated hit is an awesomely good time where big hair meets big dreams!

SCHEDULE: Monday – Saturday. Dark Sundays. Performances from 31 August.

VENUE: Shaftesbury Theatre, Shaftesbury Avenue, London, WC2. Nearest Tube: Tottenham Court Rd.



WHAT'S ON

LONDON 2011-2012

LEISURE
CONNECT

Tickets to theatre & other city essentials

Contact Your Travel Agent for Direct Access to Special Rates on Preferred Ticket Inventory

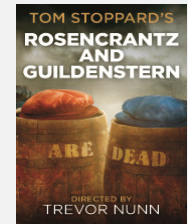
ROSENCRANTZ AND GUILDENSTERN ARE DEAD

PLAY

Trevor Nunn directs Tom Stoppard's first masterpiece as the second production of his captivating season at the Theatre Royal Haymarket. A verbally scintillating and richly inventive play, Stoppard retells Hamlet through the eyes of two of its minor characters. Vaguely conscious that they are bit parts in a much bigger story of which they have no direct knowledge, Rosencrantz and Guildenstern hilariously and poignantly inhabit a world completely beyond their grasp. The cast features Samuel Barnett as Rosencrantz, Jamie Parker as Guildenstern.

SCHEDULE: Monday – Saturday. Dark Sunday. Performances from 16 June.

VENUE: Theatre Royal Haymarket, Haymarket, London, SW1. Nearest Tube: Piccadilly Circus or Leicester Square



SHREK

MUSICAL

Join Shrek (Nigel Lindsay), our unlikely hero, and his loyal steed Donkey (Richard Blackwood) as they set off on a quest to rescue the beautiful (if slightly temperamental) Princess Fiona (Amanda Holden) from her tower, guarded by a fire breathing love-sick dragon. Add the diminutive Lord Farquaad (Nigel Harman), a gang of fairytale misfits, and a biscuit with attitude, and you've got this year's must see new musical comedy – SHREK THE MUSICAL!

SCHEDULE: Monday, Wednesday – Sunday. Dark Tuesday.

VENUE: Theatre Royal, Drury Lane, Catherine Street, London, WC2. Nearest Tube: Covent Garden



STOMP

DANCE

Stomp is now FRESHER, FASTER AND FUNNIER than ever before, with new routines, new choreography and new music. This multi-award winning show has a universal language of rhythm, theatre, comedy and dance. Eight performers use everything from Zippo lighters, plastic bags, bin lids and even the kitchen sink to hammer out an explosively feel good rhythm.

SCHEDULE: Monday, Thursday – Sunday. Dark Tuesday and Wednesday with exceptions.

VENUE: Ambassadors Theatre, West Street, London, WC2. Nearest Tube: Leicester Square



THRILLER - LIVE

MUSICAL

A stage and video spectacular celebrating the wonderful career of the World's Greatest Entertainer – Michael Jackson. The amazing show featuring over 20 performers with a full company of singers, dancers and live band celebrates the King of Pop like never before! With original choreography from MTV award winning choreographer, LaVelle Smith Jr. and brilliant vocal performances, Jackson's amazing songs and videos are brought to life on stage in a spectacular and sensational way.

SCHEDULE: Tuesday – Sunday. Dark Monday.

VENUE: Lyric Theatre, Shaftesbury Avenue, London, W1. Nearest Tube: Piccadilly Circus



WAR HORSE

PLAY

At the outbreak of World War One, Joey, young Albert's beloved horse, is sold to the cavalry and shipped to France. He's soon caught up in enemy fire, and fate takes him on an extraordinary odyssey, serving on both sides before finding himself alone in no man's land. Albert cannot forget Joey and, still not old enough to enlist, he embarks on a treacherous mission to find him and bring him home. A transfer from the hugely successful run at the National Theatre War Horse is based on the celebrated novel by the Children's Laureate (2003-05), Michael Morpurgo.

SCHEDULE: Monday – Saturday. Dark Sunday.

VENUE: New London Theatre, Drury Lane, London, WC2. Nearest Tube: Holborn or Covent Garden



WHAT'S ON

LONDON 2011-2012

LEISURE
CONNECT

Tickets to theatre & other city essentials

Contact Your Travel Agent for Direct Access to Special Rates on Preferred Ticket Inventory

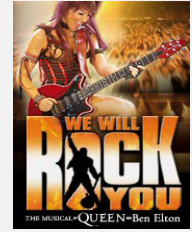
WE WILL ROCK YOU

MUSICAL

Seen by over 10 million people worldwide, *We Will Rock You* is now storming into its 9th year and is the biggest rock theatrical event of the century! This sensational mega-hit phenomenon continues to raise the roof and brings audiences to their feet with rapturous standing ovations every night. Created by Queen and Ben Elton, the show includes over 24 of Queen's classic hits, including "Killer Queen", "Bohemian Rhapsody", "Radio Ga Ga"... and, of course, "We Will Rock You".

SCHEDULE: Monday – Saturday. Dark Sunday.

VENUE: Dominion Theatre, Tottenham Court Road, London, W1. Nearest Tube: Tottenham Court Rd.



WICKED

MUSICAL

Based on the acclaimed novel by Gregory Maguire that re-imagined the stories and characters created by L. Frank Baum in *The Wonderful Wizard of Oz*, *Wicked* tells the incredible untold story of an unlikely but profound friendship between two girls who first meet as sorcery students. Their extraordinary adventures in Oz will ultimately see them fulfill their destinies as Glinda The Good and the Wicked Witch of the West.

SCHEDULE: Monday – Saturday. Dark Sunday.

VENUE: Apollo Victoria Theatre, Wilton Road, London, SW1. Nearest Tube: Victoria



THE WIZARD OF OZ

MUSICAL

Andrew Lloyd Webber's new production of *The Wizard of Oz* is an enchanting adaptation of the all time classic, totally reconceived for the stage by the award-winning creative team that delighted audiences of all ages with their recent London Palladium revival of *The Sound of Music*. Developed from the ever popular MGM screenplay this new production contains all the much-loved songs from the Oscar winning movie score, all the favourite characters and iconic moments, plus a few surprises along the way, including new songs by Andrew Lloyd Webber.

SCHEDULE: Tuesday – Sunday. Dark Monday.

VENUE: London Palladium, Argyll Street, London, W1. Nearest Tube: Oxford Circus



THE WOMAN IN BLACK

PLAY

Since 1989, over 7 million people have lived to tell the tale of one of the most exciting, spooky, gripping and successful theatre events ever staged. Unanimously acclaimed by the critics, Stephen Mallatratt's adaptation of Susan Hill's bestselling novel combines the power and intensity of live theatre with a cinematic quality inspired by the world of film noir. It is a formula that provides audiences with an evening of unremitting drama as they are transported into a terrifying and ghostly world.

SCHEDULE: Monday – Saturday. Dark Sunday.

VENUE: Fortune Theatre, Russell Street, London, WC2. Nearest Tube: Covent Garden



YES, PRIME MINISTER

PLAY

Thirty years ago the first episode of *Yes, Minister* was broadcast and went on to become television's most successful political comedy ever. It and the equally successful sequel, *Yes, Prime Minister*, captured a niche in the political consciousness of the nation. The original writers of these classic series have reunited for this anniversary production and Prime Minister Jim Hacker, his Cabinet Secretary Sir Humphrey Appleby and his Principal Private Secretary Bernard Woolley are all back, in a brand new play.

SCHEDULE: Monday – Saturday. Dark Sunday.

VENUE: Apollo Theatre, Shaftesbury Avenue, London, W1. Nearest Tube: Piccadilly Circus

